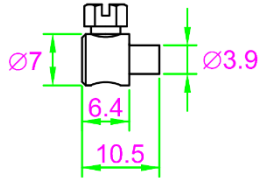


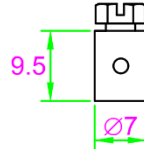
SERRE-CABLES

D 84



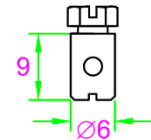
Art. 41320
percé à 2.5 mm

D 85



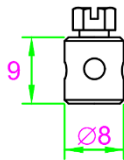
Art. 41326
percé à 2 mm

D 85A



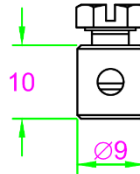
Art. 41325
percé à 2.5 mm

D 85B



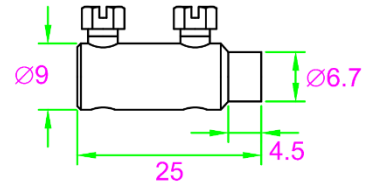
Art. 41327
percé à 2.8 mm

D 85C



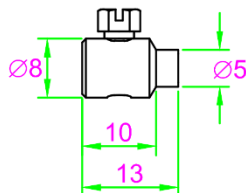
Art. 41328
percé à 3.5 mm

D 86D



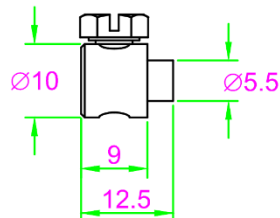
Art. 41330
percé à 3.5 mm

D 86G



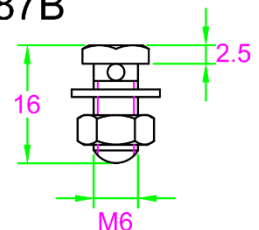
Art. 41323
percé à 3.5 mm

D 86E



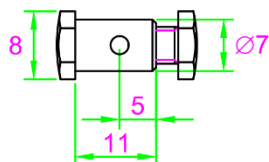
Art. 41324
percé à 3.5 mm

D 87B



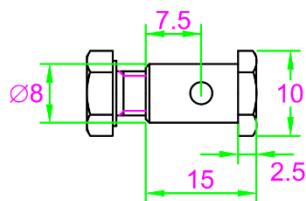
Art. 41332
percé à 2.3 mm

D 88



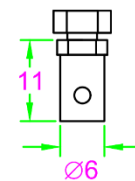
Art. 41333
percé à 2.5 mm

D 89



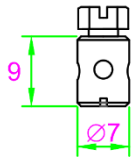
Art. 41329
percé à 3.0 mm

D 90



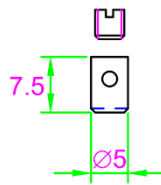
Art. 41321
percé à 2.2 mm

D 91



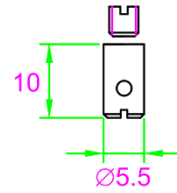
Art. 41339
percé à 2.5 mm

D 92



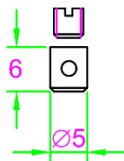
Art. 41337
percé à 2.0 mm

D 93



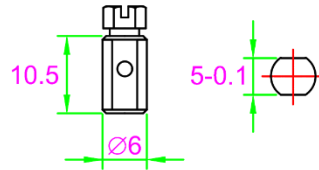
Art. 41338
percé à 2.2 mm

D 94



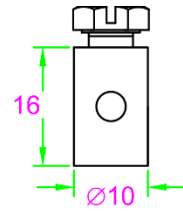
Art. 41336
percé à 1.6 mm

D 95



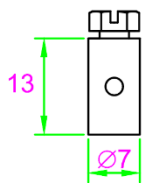
Art. 42007
percé à 2 mm

D 96



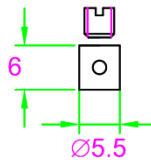
Art. 41341
percé à 3.0, 3.5, 4.5 ou 5.0 mm

D 97



Art. 41322
percé à 2.4 mm

D 98



Art. 41340
percé à 1.8 mm