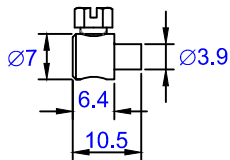
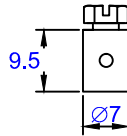


D 84



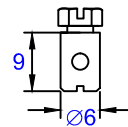
Art. 41320
percé à 2.5 mm

D 85



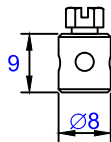
Art. 41326
percé à 2 mm

D 85A



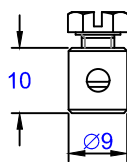
Art. 41325
percé à 2.5 mm

D 85B



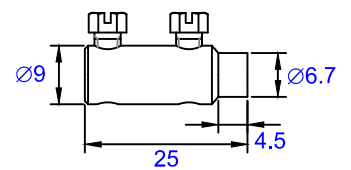
Art. 41327
percé à 2.8 mm

D 85C



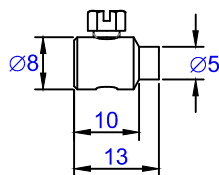
Art. 41328
percé à 3.5 ou à 4.5 mm

D 86D



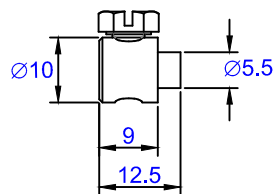
Art. 41330
percé à 3.5 mm

D 86G



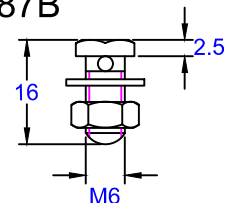
Art. 41323
percé à 3.5 mm

D 86E



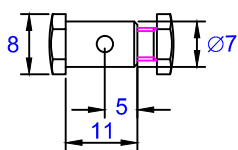
Art. 41324
percé à 3.5 mm

D 87B



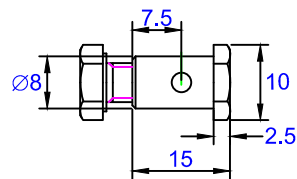
Art. 41332
percé à 2.3 mm

D 88



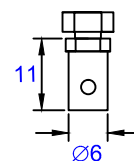
Art. 41333
percé à 2.5 mm

D 89



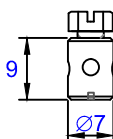
Art. 41329
percé à 3.0 mm

D 90



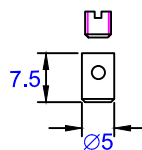
Art. 41321
percé à 2.2 mm

D 91



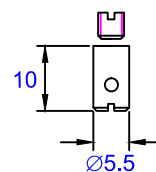
Art. 41339
percé à 2.5 mm

D 92



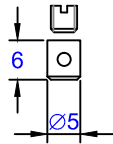
Art. 41337
percé à 2.0 mm

D 93



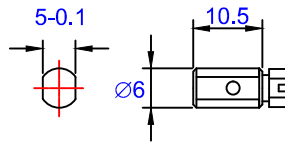
Art. 41338
percé à 2.0, 2.2 ou à 2.5 mm

D 94



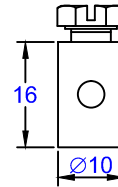
Art. 41336
percé à 1.6 mm

D 95



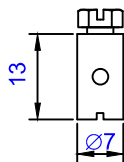
Art. 42007
percé à 2 mm

D 96



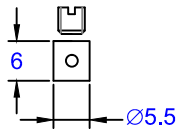
Art. 41341
percé à 3.0, 3.5, 4.5 ou à 5.0 mm

D 97



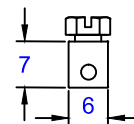
Art. 41322
percé à 2.4 mm

D 98



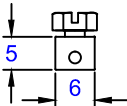
Art. 41340
percé à 1.8 mm

D 99



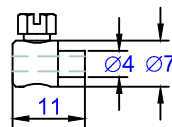
Art. 41342
percé à 2.3 mm

D 100



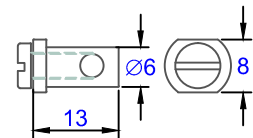
Art. 41311
percé à 1,8 mm

D 101



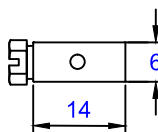
Art. 41312
percé à 2.3 mm

D 102



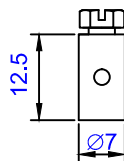
Art. 41313
percé à 2.2 ou à 3.5 mm

D 103



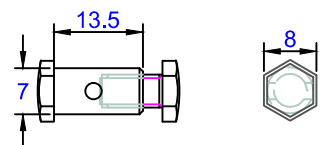
Art. 41314
percé à 2,2 mm

D 104



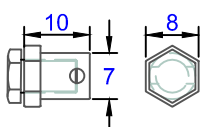
Art. 41315
percé à 2,2 mm

D 105



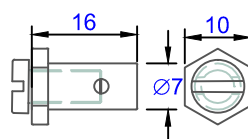
Art. 41316
percé à 2.5 mm

D 106



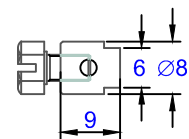
Art. 41317
percé à 2,2 mm

D 107



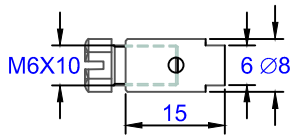
Art. 41318
percé à 2,2 mm

D 108



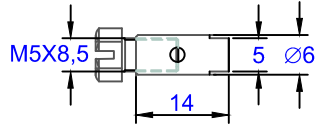
Art. 41319
percé à 2.5 mm

D 109



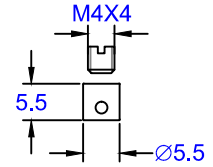
Art. 01410 ou 01411
percé à 2,3 ou à 3,5 mm

D 110



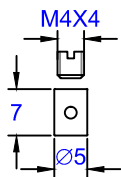
Art. 41331
percé à 2,2 mm

D 111



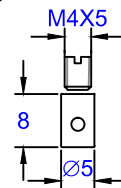
Art. 41345
percé à 1,8 mm

D 112



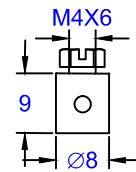
Art. 41346
percé à 1,8 mm

D 113



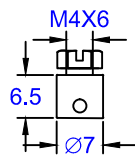
Art. 41347
percé à 2,0 ou à 2,7 mm

D 114



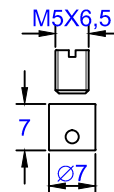
Art. 41348
percé à 2,5, 2,8, 3,0, 3,3 ou à 4,0 mm

D 115



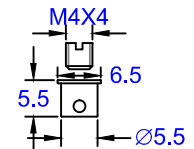
Art. 41349
percé à 2 mm

D 116



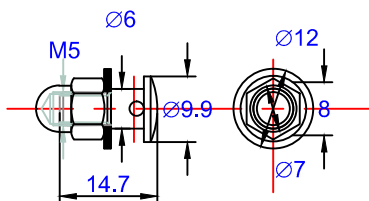
Art. 41352
percé à 2 mm

D 117



Art. 41353
percé à 1,8 mm

D 118



Art. 41354
percé à 2,2 mm